

LEGENDARY SUITES BROCHURE

SOFITEL
LEGEND

A *LEGENDARY*
JOUR
INTO
THE
GRAND
NEY

In order to fully
appreciate a country,
you have to savour it,
eat it, drink it,
hear it singing.

Michel Déon
French author
1919 - 2016

LEGENDARY SOUVENIRS OF HISTORY

If only the walls could talk... They would surely have extra-ordinary tales to tell; of 16th century Princes and Queens on diplomatic missions and 17th century admirals commanding launches for distant lands. Not to mention stories of eager artists and craftsmen, pursuing a vision as they decorated The Grand.

The majestic Sofitel Legend The Grand Amsterdam, overflowing with history but vibrantly modern. Offering a supreme hotel experience for guests from oceans away, or from just across the canal.



Amsterdam

Only a few minutes away from The Grand, there is a great range of sightseeing possibilities. Dam Square, a frequent stage for historical drama, is now the city's favourite meeting place.

Nearby you can find, amongst others, the magnificent Royal Palace, the 15th century Nieuwe Kerk (New Church), the picturesque shopping area the 'Negen Straatjes' (Nine Streets) and De Bijenkorf, Amsterdam's cutting-edge department store.

Within a few more minutes many other wonderful places worth a visit can be found, such as the floating flower market with its brilliant colours and intoxicating scents, the unforgettable Anne Frank House and the famous antique area "Het Spiegelkwartier".

Also situated close to the hotel is the Fashion & Museum District, where you can visit world-famous museums such as the Rijksmuseum, the Van Gogh museum and the Stedelijk Museum. Also the Concertgebouw, the House of Bols Cocktail & Genever Experience and Amsterdam's most exclusive shopping street, the P.C. Hooftstraat, are located in this area.

LIVE THE LEGEND

Located between two of the oldest canals in the heart of the city, The Grand boasts a rich history; from a 15th century convent to royal lodgings, to the headquarters of the Admiralty to the City Hall of Amsterdam.

The former City Hall's 'new wing' is viewed as one of the finest examples of Amsterdam School architecture. It is designed by architect N. Lansdorp (1885–1968) with gable sculptures by Hildo Krop (1884–1970).

In 2010, the 17th century canal ring area was placed on the UNESCO World Heritage list. The Oudezijds Voorburgwal is the perfect place to start a stroll to discover the rich history surrounding the hotel.





LEGENDARY LUXURY

The rich history is, as naturally, incorporated into the new architectural details in many ways.

Students of the Design Academy of Eindhoven used legendary persons from the history of the building as a source of inspiration: their creative contribution with historical influences is draped across the suites. De Margerie infused the hotel with French elegance and grandeur, transforming it into a

veritable city palace. Finished with classic features, the suites range from 45 to 100 square meters and feature Sofitel MyBed King size beds with 350 thread counts Egyptian cotton sheets, BOSE entertainment system with DVD player, complimentary WIFI and Nespresso, air-conditioning and an opulent en-suite salle de bien with walk-in rain shower and bathtub with TV.

EXPERTISE AND ETIQUETTE BUTLER SERVICE



Luxury is not merely a case of material comfort, it also encompasses the human factor; 'savoir-faire' and 'savoir-être' (expertise and etiquette). Men and women who are truly passionate about their profession, ambassadors who bring the hotel to life. They bring a ray of sunshine to everyday life and place their considerable talents at the service of our guests.

The Grand offers free Butler service to guests staying in one of the 52 spacious suites. This exclusive service offers special benefits, such as personalised rooming, (un)packing of suitcases and presenting 'pillow menu's' and 'bath rituals'.

The Butler provides a unique and direct line between the guest and the hotel services offered, such as rentals of cars and limousines, bicycles and chariots, laundry service and shoe polishing, reservations in restaurants and clubs, excursions and tours, and anything else to make the stay at The Grand the most comfortable and memorable as possible.



JUNIOR SUITES



Contemporary design, warmed by bare brick, deep mahogany and plush textiles characterise the interior of the Junior Suites. The living room of the Junior Suites is decorated in velvety shades of aqua, plum or sienna. The spacious bedroom features a king-size Sofitel MyBed and a comfortable sitting area and connects to a generous bathroom with walk-in shower, stylish bath and Hermès amenities.

Approximate surface:
45 m² / 484 ft²



PRESTIGE SUITES



Indulge in pure luxury and enjoy the comfort of one of the iconic Prestige Suites, overlooking the picturesque Amsterdam canals.

The wonderful custom-made furniture and artworks in the suites were all carefully selected by interior architect Sybille de Margerie, to enhance the petrol colour scheme that weaves throughout the suites.

Approximate surface:
55 m² / 592 ft²



HISTORICAL CANAL HOUSE SUITES

Twelve Canal House Suites are situated in the former homes of famous Dutch admirals, such as Michiel de Ruyter. In these suites you go back to a metropolitan history, dating back to the 17th century.

The Canal House Suites are characterised by timeless elegance of cream-coloured walls, wooden ceiling beams, warm autumn colours and a subtle mix of classic and modern furniture. Various Canal House Suites feature a fully-equipped kitchenette, while several other apartments have a private roof terrace or a 'split level' layout. Three Canal House Suites offer a private entrance directly on the historic canal side.

Approximate surface:
65 m² / 700 ft²

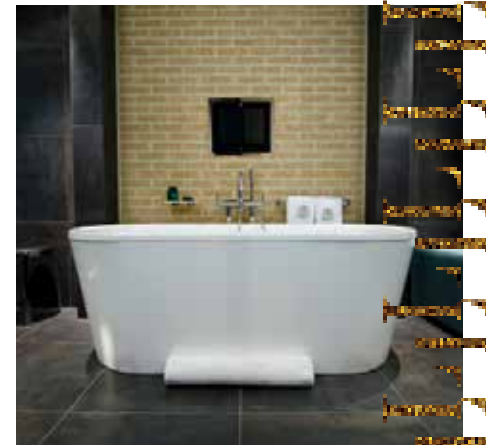




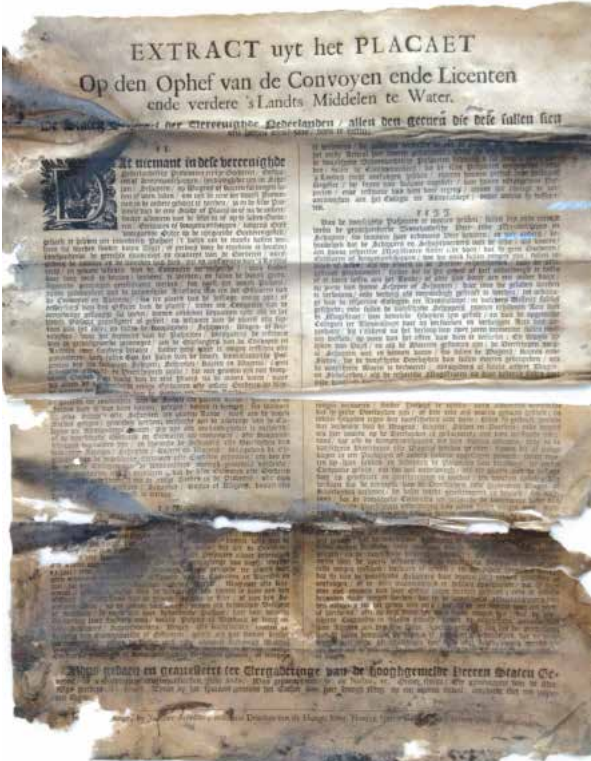
CANAL HOUSE SUITES

The traditional feel of the twelve Canal House Suites is complemented by state-of-the-art facilities blended with modern amenities including fully equipped kitchenettes in selected suites. Also the bathroom experience is truly luxurious with sophisticated sanitary facilities provided by the TOTO brand.

Don't want to spend much time inside your home away from home? Take your morning cappuccino or Afternoon Tea out on your private balcony, for a refreshing moment with great views of Amsterdam.



Michiel de Ruyter (1607 - 1676)
Dutch Admiral
Guest at The Grand in 1665



Historical discovery during refurbishment
dated July 1687



LEGENDARY MOMENT

1648 - The Dutch East India Trading Company determined the world trade, and Amsterdam was the centre of this. The city was beautiful and new public buildings, such as the city hall on Dam Square, the stock exchange and the new Admiralty building, characterized its appearance. The Dutch Republic as a world power gave the city of Amsterdam an entirely new role. Amsterdam's fleet had to ensure that trade could be conducted safely. Whether this concerned the Sont passage or trade with the Levant, the

Admiralty equipped its fleet to make it clear that Holland was in charge of the seas. A number of Dutch heroes were born during this time, such as Maarten Tromp and Michiel de Ruyter. A new building fit in with the important role of the Admiralty in Amsterdam. With the construction of new guest housing, the 'Oudezijds Herenlogement' (Gentleman's Lodgings), the Princenhof also became available, and the Admiralty gained possession of the entire complex.

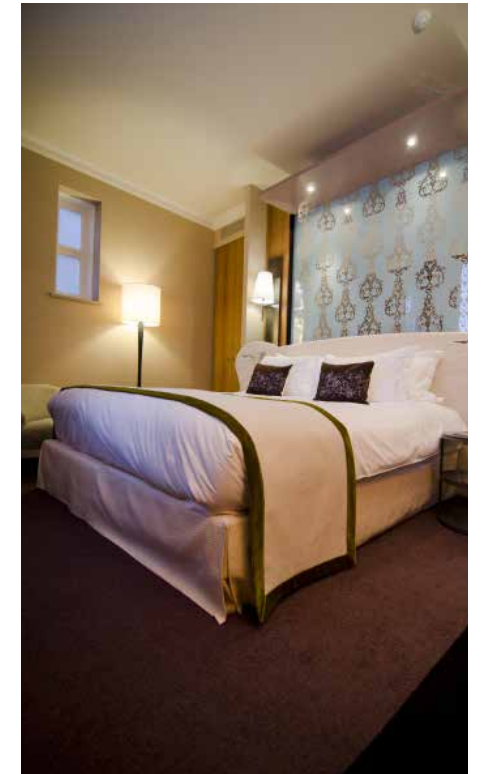


OPERA SUITES

The six lavish Opera Suites offer you the ultimate in luxury. Three of them do overlook the charming and peaceful inner garden and are immaculately designed to create a memorable stay. The suites are decorated in shades of jade, aqua and ecru, in keeping with both French elegance and Dutch design. Bathrooms with double sinks, rainfall shower and

a separate bathtub above which a flat-screen television is integrated, heighten the classic-meets-modern feel with iridescent glass tile mosaics.

Approximate size:
75 square metres / 807 square feet





OPERA SUITES – DUPLEX

Enjoy the historic ambiance of staying in duplex Canal House Suite, dating back to the 17th century, and overlooking the peaceful inner courtyard. The three charming duplex Opera Suites offer two floors of pure luxury in a great amount of privacy. A lovely modern living room with high ceilings, large windows and some with an authentic fireplace, set the ambiance on the ground floor.

The second floor does accommodate the master bedroom with annex bath room. Your butler will unpack and arrange your luggage in the walk-in closet.

Approximate size: 75 square metres / 807 square feet





BRIDAL SUITE

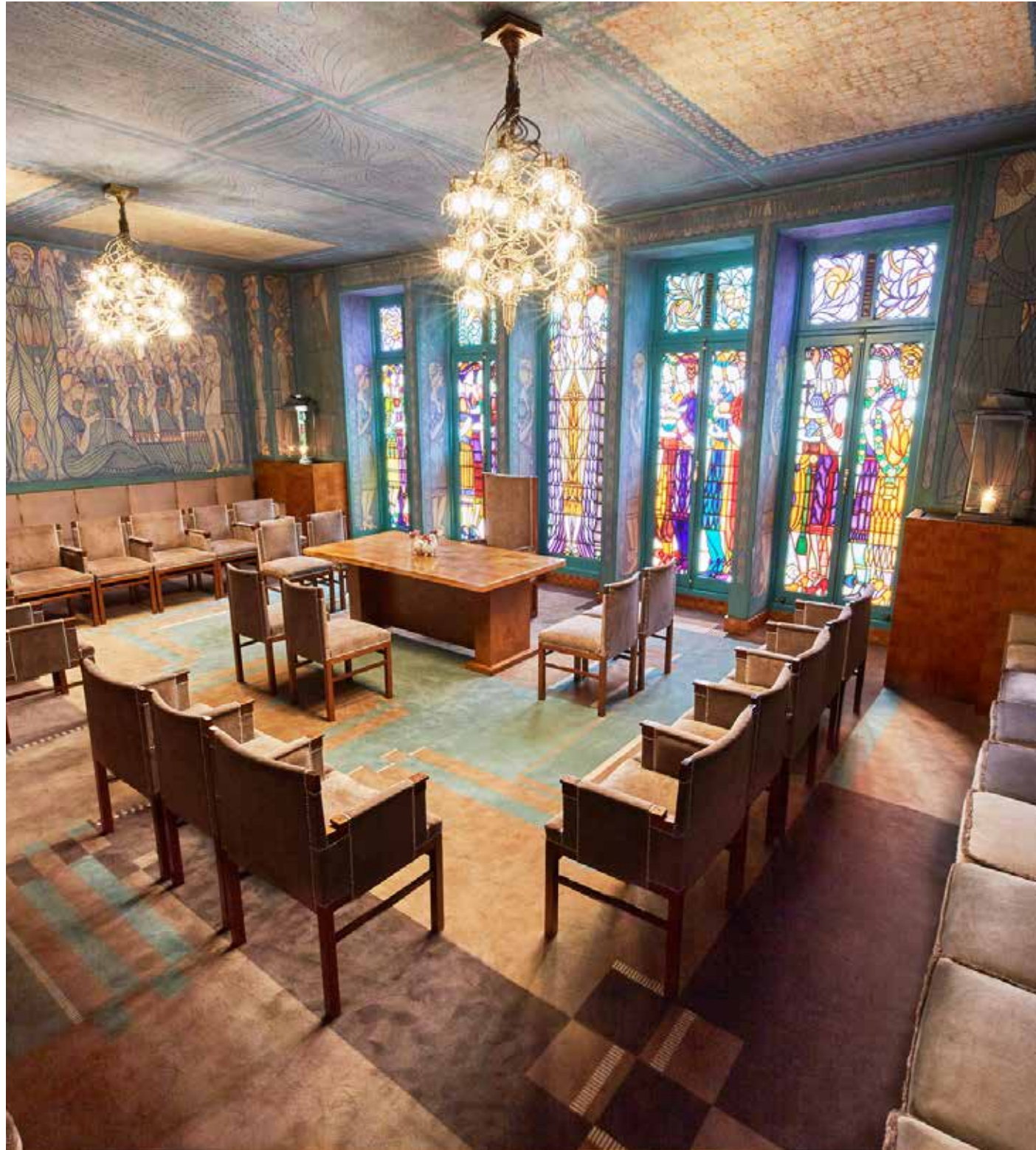
Spend a romantic honeymoon or anniversary in the irresistible Bridal Suite. A special Opera suite displaying incomparable French flair, nestled away on the fourth floor and overlooking the peaceful inner garden.

Designed around the sensual tones of rich wines and beautiful roses, this luxurious suite will make you fall in love all over again.

Relish in the pleasure of a universe conceived for two. Double Jacuzzi and Hamam, fine linens, soft blankets and cozy sitting area. Have your butler run a scented bath or reserve a treatment room for two at the Bridal Suite SoSPA, to indulge together, relax and enjoy.

Approximate size:
75 square metres / 807 square feet





THE FIRST CLASS MARRIAGE CHAMBER

Step into an Art Deco masterpiece of love and marriage, created in 1926.

Dazzling Chris Lebeau (1878-1945) windows in ruby, emerald and amethyst portraying the courtship and wedding of an elegant bride and groom. Bold yet delicate frescos in turquoise swirls and gold accents cover

walls and ceilings, surrounding you with a magnificent tale.

Breathtaking, soul-filled, an ode to love and beauty taking you on a journey about the story of life! For weddings and other extraordinary ceremonies.





IMPERIAL SUITE – WILLEM V

One of three extraordinary, 100m² Imperial Suites, each named after one of our illustrious guest from centuries past. This Imperial Suite is situated on the second floor and named after Willem V Batavus (°1748 – †1806), Prince of Orange-Nassau and the last Stadtholder of the Dutch Republic.

Distinctive contemporary design in luxurious, intensely private spaces. The butlers respond to your every request. Settle into two stunning bedrooms, featuring sensual patterns and figurative murals in urbane color schemes. Embroidered cushions,

woven blankets, original art. The reflection of a modern yet timeless vision of all-encompassing refinement and understated elegance. A magnificent mosaic spa bathroom offers both well-being and privacy, while the spacious Art Deco-style living room is perfect for business, leisure and entertaining. Have the butler arrange catering for an intimate dinner party on the evening of your choice. Imperial suites are ideal for presidents, celebrities and dignitaries requiring especially attentive service. Approximate size: 100 square metres / 1076 square feet





IMPERIAL SUITE - MARIA DE MEDICI

Connecting with a lovely Superior Room and overlooking the picturesque Amsterdam canal this is where French elegance meets Dutch heritage. French elegance was also presented in 1636, when the Queen of France, Maria de Medici (*1575 - †1642), resided here at the 'Logement voor Prinsen en Grooten Heeren' or lodgings for Princes and noblemen.

Discover The Grand by taking a private tour throughout the hotel and learn all about the rich national Dutch history from Convent to City hall, from Admiralty to Legendary hotel.

Approximate size:
100 square metres / 1076 square feet

This feminine style Imperial Suite, situated on the third floor, is named after this legendary guest.





IMPERIAL SUITE - WILLEM VAN ORANJE

Situated on the fourth floor, this Imperial Suite is named after the Dutch Father of the Fatherland and founder of the Orange Dynasty, William the Silent (*1533 - †1584) who resided in these buildings in 1581.

Another legendary guest who stayed in this particular Imperial Suite was Michael Jackson. During his 'HIStory World Tour', The Grand was Michael Jackson's residence in Amsterdam. The King of Pop arrived by boat and

stayed for several days in our most opulent Imperial Suite. One evening during his stay he ordered hot chocolate for the hundreds of shivering fans waiting in the cold outside. As a tribute to this generous gesture we have introduced the famous 'MJ's Hot Chocolate' to our menu in our Library 'Or' on the ground floor.

Approximate size:
100 square metres / 1076 square feet





ROYAL SUITE

The well-appointed Royal Suite is located on the third floor of a former canal house and overlooks the hotel's opulent courtyard. This most prestigious guest room will make you feel like the royals and admirals who have graced our building over the years. Contemporary design combined with monumental wood beamed ceilings create a historical home away from home atmosphere. Featuring a magnificent king-size

bedroom with an upstairs private balcony, a spacious bath room fraught with Hermès amenities, a living room with lounge and dining area adjacent to a small library with working desk create the perfect setting for a business or leisure stay.

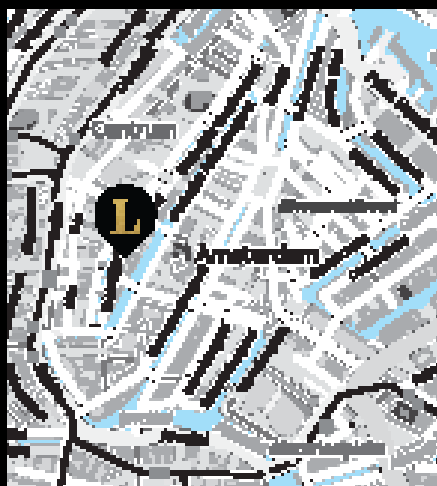
Approximate size:
100 square metres / 1076 square feet







HOTEL
THE GRAND
AMSTERDAM
Depuis 1578



Sofitel Legend The Grand Amsterdam
Oudezijds Voorburgwal 197 - 1012 EX Amsterdam
T : 31(0)20 555 31 11 - H2783@sofitel.com
www.sofitel-legend-thegrand.com